



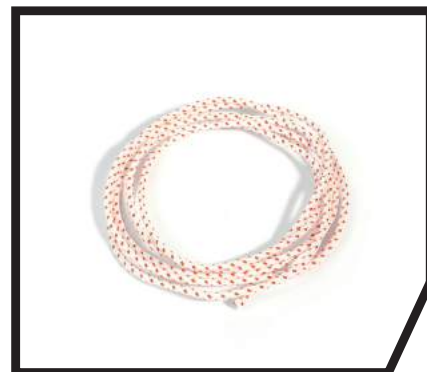
## RICAMBI UNIVERSALI SPARE PARTS



Cod. N001.53 - Serbatoio / Fuel tank 12 Lt  
 Cod. N004.53 - Serbatoio / Fuel tank 15 Lt



Cod. N002.94  
 Impugnatura in gomma per avviatore manuale  
 Starter Rubber grip



Cod. N004.79  
 Cordino avviatore manuale (2 m)  
 Starter rope (2 m)



Cod. N001.94 - Acceleratore /Throttle manual start engine  
 Cod. N012.94 - Acceleratore con pulsante per avviamento elettrico.  
 Throttle for electric start engine.



Cod. N026.87  
 Tubo benzina (2 m) / Fuel tube



Cod. M003.52  
 Impugnatura in nylon per avviatore manuale  
 Starter grip



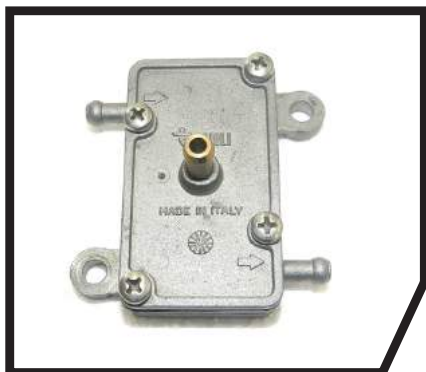
Cod. N015.32  
 Filtro benzina / Fuel filter



Cod. N006.52  
 Kit arpionismo avviatore manuale  
 Manual starter ratchet kit



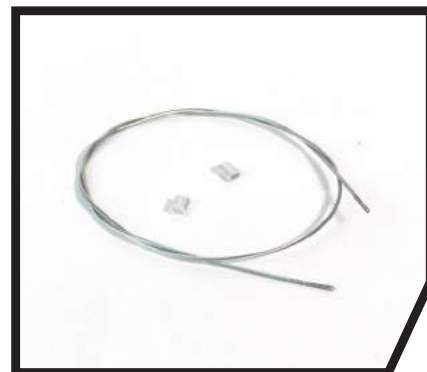
Cod. PDEP.61  
 Pompa benzina / Fuel pump



Cod. PBENZ.61  
Pompa benzina a depressione  
Depression fuel pump



Cod. 00200.24  
Batteria life ultraleggera 12 V /Battery life  
Kg 0.6 - cap 2.0 Ah - CCA: 160  
Dimensioni / Size: 113x70x85 mm



Cod. N002.78  
Cavo d'acciaio di sicurezza con morsetti  
Safety wire with clamp



Cod. N001.78  
Filo acceleratore / Throttle wire



Cod. BR8ES (-10 e +15 °C)  
Cod. BR9ES (+16 e +40 °C)  
Candela / spark plug



Cod. N002.53  
Rubinetto / Tap



Cod. N005.53  
Pescante serbatoio / Tank filler



Cod. M001.13  
Molla di riavvolgimento per avviatore  
manuale  
Standard spring for manual starter



## ACCESSORI E STRUMENTI ACCESSORIES & TOOLS



Cod. 03500.51  
 Contagiri e contaore elettronico digitale  
 Electronic digital revolution counter & hour counter



Cod. 03000.51  
 Contagiri elettronico digitale  
 Electronic digital revolution counter



Cod. N027.97  
 Estrattore puleggia e volano motori "M"  
 Extractor for pulley and flywheel for engines "M"



Cod. N028  
 Boccola per ghiera frizione motori Minari  
 Engine  
 Key ring clutch release



Cod. 57010.97  
 Chiave a compasso / Wrench compass



Cod. 57004.97  
 Chiave eccentrico e puleggia  
 Wrench for eccentric and pulley



Cod. 57003.97  
 Estrattore volano / Extractor for flywheel



Cod. N028.97  
 Estrattore multifunzione per motori Minari  
 Engine 180 cc e 200 cc  
 Multifunction extractor



Cod. 00001.24  
 Caricabatteria per batterie life  
 Battery charger for life battery



Cod. N001.22 - Centralina per motori con avv. elettr. / Control unit for engine E-Start  
 Cod. N002.22 - Centralina per motori con avviamento elettrico + carica.  
 Control unit for engine E-Start + charger



Cod. 00001.65  
 Olio sintetico per motori 2T  
 Synthetic oil for 2 stroke engines



Cod. P003.95  
 Manica a vento / Windsock



Cod. N002.69  
 Telo per gabbia paramotore  
 Cover for paramotor frame



Cod. S01APCO.69  
 Sella APCO standard  
 Cod. S02APCO.69  
 Sella APCO attacchi bassi  
 Sella APCO low hang point



Cod. 99015.95R  
 Cappellino / Cap Minari Engine  
 Cod. 99106.95  
 T-shirt Minari Engine



Cod. 99086.95  
 Giacca / Jacket Minari Engine



Cod. N003.69  
 Casco / Helmet Minari Engine / N. Volo



Cod. 99097.95  
 Camicia / Shirt Minari Engine  
 Cod. 99078.95  
 Felpa / Sweatshirt Minari Engine



## ELICHE E ACCESSORI PROPELLERS & ACCESSORIES



Cod. N001.54 - Elica in legno Ø 125 cm  
 Wood propeller Ø 125 cm  
 Cod. N002.54 - Elica in legno Ø 130 cm  
 Wood propeller Ø 130 cm



Cod. N009.54 - E-props scomponibile in carbonio Ø 125 cm  
 Cod. N010.54 - E-props Ø 130 cm  
 Cod. N011.54 - E-props Ø 140 cm



Cod. N012.54  
 Elica tripala Ø 150 cm per Stratos  
 Helix 3 blade prop Ø 150 cm for Stratos engine



Cod. N004.54 - Elica Helix scomponibile in carbonio Ø 125 cm 7° x 180 cc  
 Cod. N013.54 - Elica Elix Ø 125 cm 8° x 200 cc  
 Cod. N005.54 - Elica Elix Ø 130 cm 6° x 180 cc  
 Cod. N014.54 - Elica Elix Ø 130 cm 7° x 200 cc



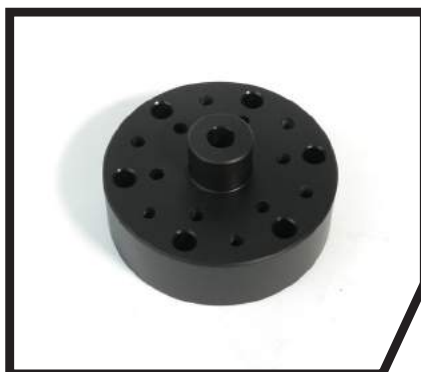
Cod. N006.54  
 Elica scomponibile Hi-Fly Ø 125 cm



Cod. N008.54  
 Fodere per elica scomponibile Ø 125 cm e Ø 130 cm  
 Prop cover



Cod. N024.96  
 Distanziali elica 30 mm con interasse fori 75 mm per viti M8  
 Prop spacer - standard holes



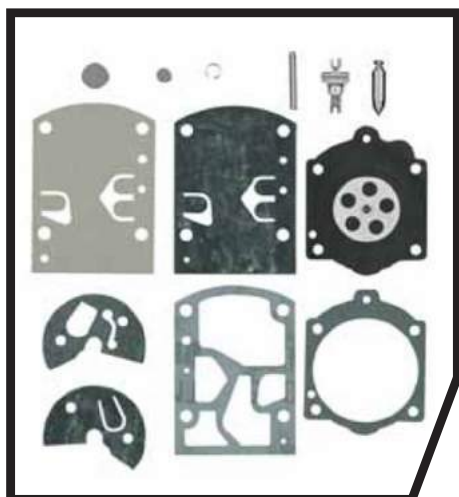
Cod. N025.96  
 Distanziali elica 30 mm con 3 forature:  
 interasse 50 mm - viti M6  
 interasse 70 mm - viti M6  
 interasse 75 mm - viti M8  
 Prop spacer - different holes



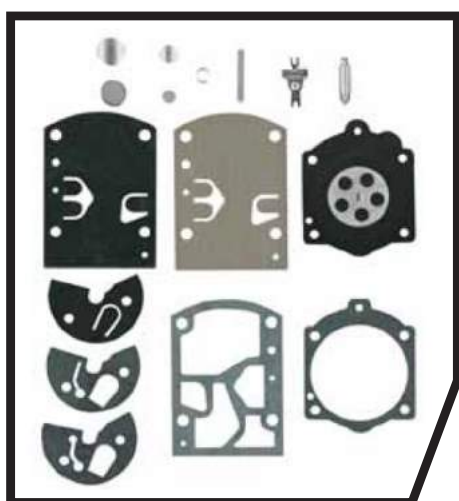
Cod. N026.96  
 Distanziale elica con attacco rapido  
 Prop quick release spacer



## KIT PER CARBURATORI CARBURETOR KITS



DESCR.	COD.	C.O
Kit riparazione Reparation kit	N027KRWB32.87	325-800
Kit membr e guarn Membr. & gask. kit	N027KMGWB32.87	D11-WB



DESCR.	COD.	C.O
Kit riparazione Reparation kit	N027KRWB37.87	K10-WB
Kit membr e guarn Membr. & gask. kit	N027KMGWB37.87	D10-WB



DESCR.	COD.	C.O
Kit riparazione Reparation kit	N027KRWG8.87	K12-WG
Kit membr e guarn Membr. & gask. kit	N027KMGWG8.87	D12-WB